

**Documentation Report of  
2nd International Symposium of  
Long-term Forest Monitoring Research in Asia:  
“A research hub of long-term forest monitoring field centers  
on environmental changes and ecosystem responses:  
Collaborating for data, knowledge and young researchers”  
March 12-13, 2022**

**Online  
Organized by  
Faculty of Forestry, Universitas Gadjah Mada  
&  
The University of Tokyo Forests,  
Graduate School of Agricultural and Life Sciences,  
The University of Tokyo**

## Table of Content

Table of Content.....	1
Introduction .....	2
Schedule March 12, 2022.....	3
1. Welcoming Address.....	4
2. Group Photo .....	5
3. Interim Report by Research Groups (RG1-3).....	7
4. Invited Speech by Each Country.....	8
5. Poster Presentation.....	10
6. Social Gathering (Voluntary) .....	11
Schedule March 13, 2022.....	12
1. Research Group Session .....	12
Research Group 1 (Water & Climate).....	12
Session 1.....	12
Session 2.....	13
Session 3.....	14
Research Group 2 (Ecosystem & Biodiversity).....	15
Session 1.....	15
Session 2.....	16
Session 3.....	17
Research Group 3 (Sustainable Management).....	18
Session 1.....	19
Session 2.....	20
Session 3.....	21
2. General Discussion .....	21
Report from RG1, Reporter: Nobuaki TANAKA.....	22
Report From RG2, Reporter: Dai Fukui.....	23
Report From RG 3: Reporter Toshiaki Owari.....	25
3. Closing and Awarding Ceremony.....	30
Poster Awards.....	30
Closing Ceremony.....	31
END OF THE SYMPOSIUM.....	31

## **Introduction**

The 2<sup>nd</sup> International Symposium of Long-term Forest Monitoring Research in Asia: “A research hub of long-term forest monitoring field centers on environmental changes and ecosystem responses: Collaborating for data, knowledge and young researchers” have been successfully conducted virtually by the Faculty of Forestry, Universitas Gadjah Mada on March 12-13, 2022.

The virtual symposium platform was using WEBEX, prepared and supported by PIKA (Center for Academic Innovation Studies) of Universitas Gadjah Mada (UGM), Yogyakarta, Indonesia.

There were about 138 participants on the first day and 110 participants on the second day, from 8 countries including Japan, Korea, China, Thailand, Taiwan, Malaysia, Sri Lanka, and Indonesia.

Since the information and finding during JSPS Symposium were significant for the member networking and updating program in the future, so, it is necessary to make a documentation report may for scientific attachment purposes.

This report documentation was prepared by the local organizer and Team from The Faculty of Forestry Universitas Gadjah Mada.

Enjoy seeing the documentation report

Yogyakarta, March 15, 2022

Sri Rahayu

Local organizer

## Schedule March 12, 2022

Plenary Session March 12 (Sat) 12:00-17:50 (JST = GST+9:00hrs)			
12:00-12:30	Opening, Welcome Address, & Group photo		
12:30-13:15	Interim Report by Research Groups (RG1-3)		
12:30	Kuraji KOICHIRO (UTokyo)	Interim Report of Collaborative Research Activities within Asian University Forests by Research Group 1 (Water & Climate)	p.13
12:45	Naoto KAMATA (UTokyo)	Interim Report of Collaborative Research Activities within Asian University Forests by Research Group 2 (Ecosystem & Biodiversity)	p.14
13:00	Toshiaki OWARI (UTokyo)	Interim Report of Collaborative Research Activities within Asian University Forests by Research Group 3 (Sustainable Management)	p.15
13:15-14:30	Invited Speech by Each Country 1		
13:15	Hyun Seok KIM (SNU)	Seoul National University Forests and Ongoing Researches and Achievements	p.16
13:40	Chiang WEI (NTU)	Rainfall network design across different spatiotemporal scales	p.17
14:05	Koichiro KURAJI (UTokyo)	Organization restructuring based on the University of Tokyo Forest Education and Research Plan (2021-2030)	p.18
14:30-14:40	Break		
14:40-15:40	Poster session in 5 breakout rooms		
15:40-17:45	Invited Speech by Each Country 2		
15:40	Dokrak MAROD (KU)	Forest Ecosystem Services based on Long Term Ecological Research at Mae Klong Watershed, Western Thailand	p.19
16:05	Mui-How PHUA (UMS)	Tropical Montane Forest Aboveground Biomass Changes from Spaceborne and Airborne Remote Sensing Data	p.20
16:30	Mingxun REN (HU)	A brief introduction of School of Forestry, Hainan University and its forest platforms	p.21
16:55	G.G.T. CHANDRATHILAKE (USJ)	Long-term research at the Department of Forestry & Environmental Science, University of Sri Jayewardenepura, Sri Lanka	p.22
17:20	WIDIYATNO (UGM)	Use of Native Species for Rehabilitation of Secondary Tropical Rainforest in Indonesia	p.23
17:45-18:00	House keeping		
18:00-	Social gathering (voluntary)		

## 1. Welcoming Address

Welcome address on the plenary session were delivery by Dean of Faculty of Forestry UGM, Dr. Sigit Sunarta, continuing by Prof. Kohei KUBOTA, Director of the University of Tokyo Forests; Prof. Naoto KAMATA Project Leader of the Japan Society for the Promotion of Science (JSPS) Core-to-core Program and Dr. Sri Rahayu, Local Organizer of "2<sup>nd</sup> International Symposium of Long-term Forest Monitoring Research in Asia".

Welcome speech by Dean  
Faculty of Forestry, Dr.  
Sigit Sunarto.



Welcome speech by Prof.  
Kohei KUBOTA, Director  
of the University of Tokyo  
Forests



Welcome speech by Prof.  
Naoto KAMATA Project  
Leader of the Japan  
Society for the Promotion  
of Science (JSPS) Core-to-  
core Program

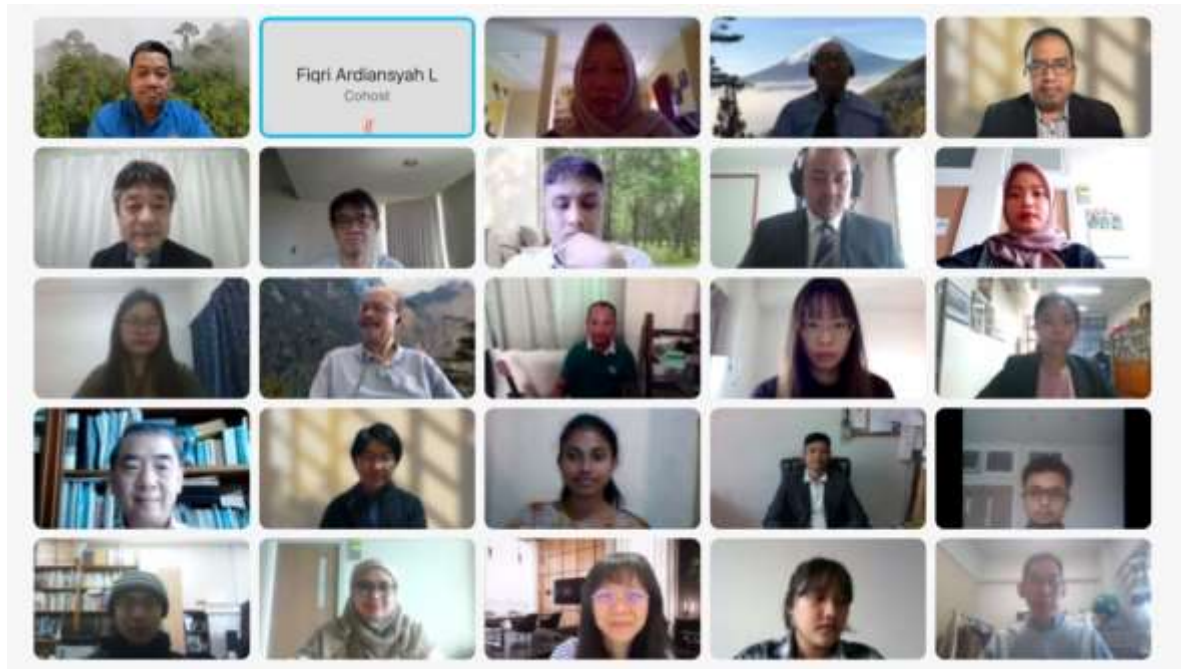


Welcome speech by local  
organizer, Dr. Sri Rahayu.



## 2. Group Photo

Total about 120 participants were captured in the photo session.







	Adita Fauzan FW	An-Chi Lou	Ancilla Filema	Arina Damayanti
Balangoda Singhak...	CHAI LEE TING	Chang Fu	chen tian	Evahtira Gunggot
EXFO-YU Jui-Chu ni...	FERA CLEOPHAS	fiqri ardiansyah cohost		Hui Zhang, HU
Jae-Woo Lee	Jepnghyun Hong	Jun Kim	LEE HYE JIN	Lin MeizhiHU
MAZNAH MAHALI u...	Nias Putri M N	Ningxin CAI		Salsa Yumna Farazika



### 3. Interim Report by Research Groups (RG1-3)

**Kuraji KOICHIRO (UTokyo)** Interim Report of Collaborative Research Activities within Asian University Forests by Research Group 1 (Water & Climate)



**Naoto KAMATA (UTokyo)** Interim Report of Collaborative Research Activities within Asian University Forests by Research Group 2 (Ecosystem & Biodiversity)



**Toshiaki OWARI (UTokyo)** Interim Report of Collaborative Research Activities within Asian University Forests by Research Group 3 (Sustainable Management)

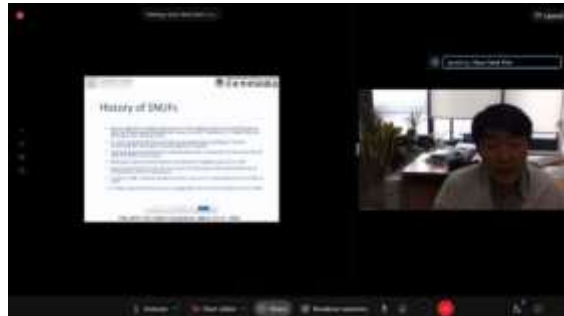




#### 4. Invited Speech by Each Country

There were eight invited speakers presented from eight countries

**Hyun Seok KIM (SNU)** Seoul National University Forests and Ongoing Researches and Achievements



**Chiang WEI (NTU)** Rainfall network design across different spatiotemporal scales



**Koichiro KURAJI (UTokyo)** Organization restructuring based on the University of Tokyo Forest Education and Research Plan (2021-2030)



**Dokrak MAROD (KU)** Forest Ecosystem Services based on Long Term Ecological Research at Mae Klong Watershed, Western Thailand



**Mui-How PHUA (UMS)**  
Tropical Montane Forest Aboveground Biomass Changes from Spaceborne and Airborne Remote Sensing Data



**Mingxun REN (HU)** A brief introduction of School of Forestry, Hainan University and its forest platforms



**G.G.T. CHANDRATHILAKE (USJ)** Long-term research at the Department of Forestry & Environmental Science, University of Sri Jayewardenepura, Sri Lanka



**WIDIYATNO (UGM)** Use of Native Species for Rehabilitation of Secondary Tropical Rainforest in Indonesia



## 5. Poster Presentation

There were 49 posters, presented in 5 Rooms

Room 1. Moderator:  
**Dr. Seno Adi Subroto**



Room 2. Moderator:  
**Prof. Ganis Lukmandaru**



Room 3. Moderator:  
**Dr. Tommy Listyanto**



Room 4. Moderator:  
**Dr. Emma Soraya**

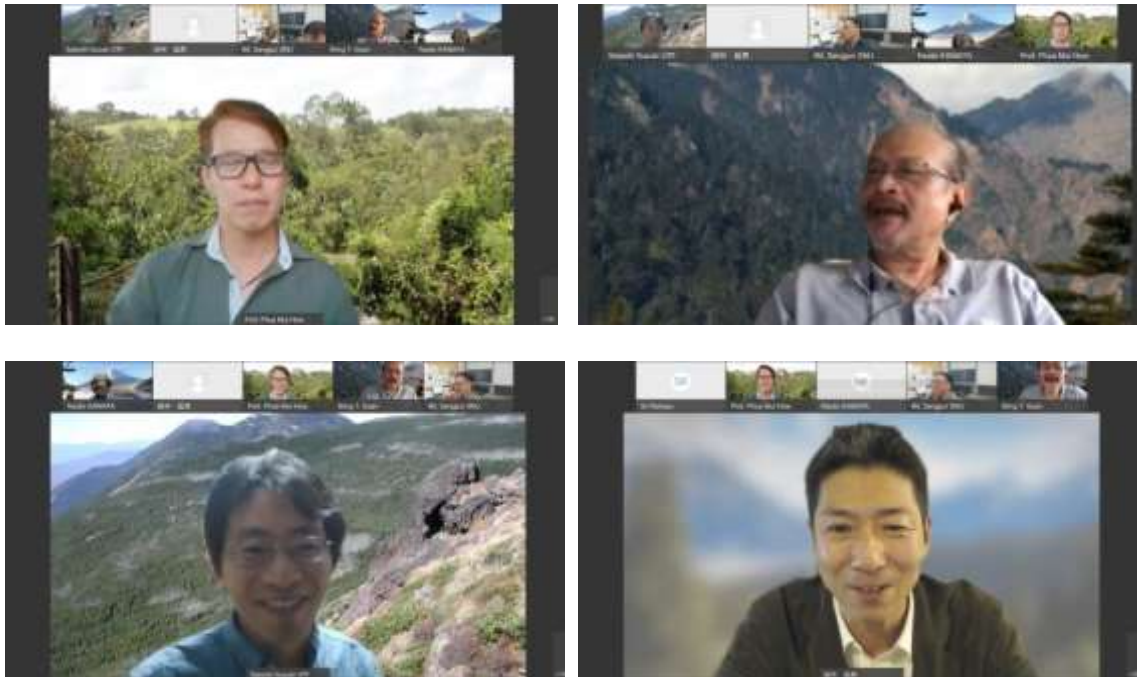


Room 5. Moderator:  
**Dr. Syaiful Amri Saragih**



## 6. Social Gathering (Voluntary)

Social gathering was conducted into four breakout room



## Schedule March 13, 2022

<b>Research Group Sessions</b> <b>March 13 (Sun) 12:00-18:00 (JST = GST+9:00hrs)</b>	
12:00-17:00	RG Sessions (see following pages for details)
17:00-17:10	Report from Research Group 1 (RG1)
17:10-17:20	Report from Research Group 2 (RG2)
17:20-17:30	Report from Research Group 3 (RG3)
17:30-17:50	General Discussion
17:50-18:00	Closing & Awarding ceremony
18:00	End of the Symposium

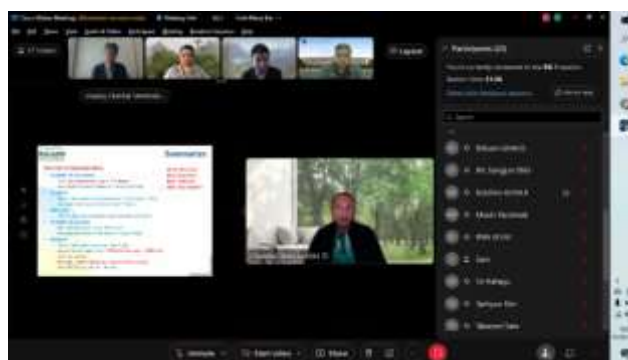
### 1. Research Group Session

There were three group oral presentation (RG 1, RG 2, RG3), each group divided into three sessions, with each speaker have 20 minutes for presentation and discussion.

### Research Group 1 (Water & Climate)

#### Session 1 (Chair: Koichiro Kuraji )

- Chatchai TANTASIRIN (KU):**  
Rainfall Characteristics and Trend at a Hill Evergreen Forest, Kog Ma Experimental Watershed, Northern Thailand



- Hatma Suryatmojo (UGM):**  
Runoff Hydrograph and Suspended Sediment Yield in Small Headwater Catchments in Tropical Rainforest, Central Kalimantan, Indonesia





- 3 **Hero Marhaento (UGM):** Long term impacts of forestation and climate change on hydrological processes of a tropical catchment



## Session 2 (Chair: Yuko Asano)

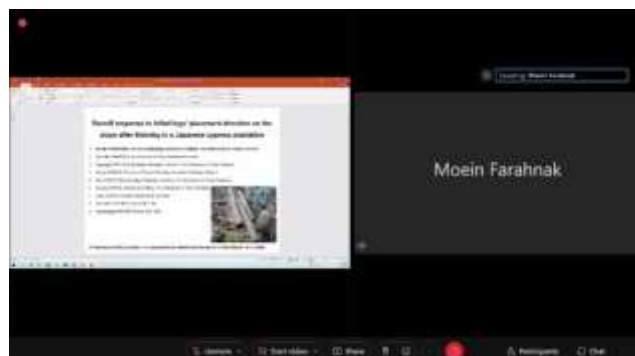
- 1 **Nobuaki TANAKA (UTokyo):** Climate elasticity of annual runoff from fifteen Asian forested catchments



- 2 **Anand Nainar (UMS):** Quantifying oil palm stemflow: methodological challenges

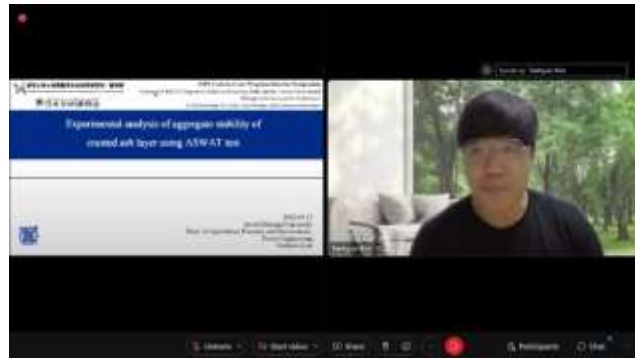


- 3 **Moein FARAHNAK (UTokyo):** Runoff response to felled logs' placement direction on a slope after thinning in a Japanese cypress plantation





- 4 **Taehyun KIM (SNU):**  
Experimental analysis of aggregate stability of crusted ash layer using ASWAT test



### Session 3 (

- 1 **Tsung-Ming TSAO (NTU):**  
Seasonal Variation of Ozone in Xitou Forest Environment



- 2 **Xiu ZENG (HU):**  
The effect of winter chilling and spring forcing on spring phenology of subtropical tree seedlings



- 3 **Xiaoyan LIN (HU):**  
Simulation of Soil Water Retention Curves and Model Optimization in Tropical Latosol Rubber Planting Area



- 4 **Yen-Jen LAI (NTU):**  
Assessing the impact of climate change on water resources: a proposal for Asian experimental forests



## Research Group 2 (Ecosystem & Biodiversity)

### Session 1

- 1 **Siti Maimunah (UGM):**  
Forest Integrated Assessment and Biodiversity Analysis for The Balaban Rayak Social Forestry at Ketapang Regency, West Kalimantan Province



- 2 **Wongsatorn PHUMPHUANG (KU):** Forest structure, species composition and dynamics in a dry evergreen forest, northeastern Thailand



- 3 **Elia Godoong (UMS):**  
Trees Diversity and Forest Carbon Assessment of a Coastal Forest Ecosystem at the Silam Coast Conservation Area, East Coast Sabah



- 4 **Diana Mahayani (UGM):**  
Assessing Changes in Bornean Rain Forest Tree Diversity and Ecosystem Functioning a Decade after Logging Using Functional Trait Approach



- 5 **Nianxun XI (HU):**  
Drought alters plant diversity effects on biomass through soil legacy effects



## Session 2

- 1 **Panida KACHINA (CMU):**  
Impact of human-induced on litter accumulation and decomposition in four forest types along the drought gradient in Thailand



- 2 **Kwang Hyun NAM (SNU):**  
Post-planting performance of *Zelkova serrata* and *Fraxinus chinensis* subsp. *rhynchophylla*



- 3 **Kyu-Suk KANG (SNU):**  
Construction of genetic linkage map and determination of QTLs by GBS and GWAS in *Populus davidiana* Dode



- 4 **Biing T. GUAN (NTU):**  
Imputing Long-term Tree Species First Leafing and Flowering Dates at the Tokyo University Hokkaido Forest



### Session 3

- 1 **Yike ZOU (HU):**  
Effects of forest area and forest fragmentation on population dynamics of Hainan gibbons



- 2 **Naoto KAMATA (UTokyo):**  
Long-term Population Dynamics of the Beech Caterpillar, *Syntypistis punctatella* (Motshulsky) (LEPIDOPTERA: Notodontidae)





- 3 **Minjung HUH (SNU):**  
Field Attraction and Electroantennogram Responses of Korean Pine Wood Nematode Insect Vectors to Sex-Aggregation Pheromone, Kairomone, and Host Volatiles



- 4 **Maria Lourdes T. LARDIZABAL (UMS):**  
Species Diversity of Bark and Ambrosia Beetles in a Tropical Montane Forest of Northern Borneo Island



- 5 **Chun-lin LI (NTU):**  
Proposal of study on altitudinal variation of bark beetle assemblages in Indo-Pacific forests



## Research Group 3 (Sustainable Management)

### Session 1. Growth, Planning and Silviculture

- 1 **Mandy Maid (UMS):**  
The growth performance of one-year-old *Octomeles sumatrana* and *Terminalia subspatula* King on degraded forest land in Sandakan, Sabah



- 2 **Kritsadapan Palakit (KU):**  
Impacts of Tree Coring on Growth of *Pinus kesiya* Royle ex Gordon



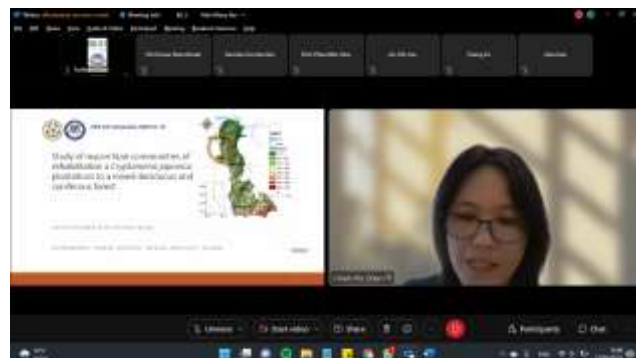
- 3 **Toshiaki Owari (UTokyo):**  
Old Sugi (*Cryptomera japonica*) plantations at the University of Tokyo Chiba Forest: Long-term growth trends and current status



- 4 **Keisuke Toyama (UTokyo):**  
Historical forest management plans as long-term research materials



- 5 **Chieh-Yin Chen (NTU):**  
Study of mycorrhizal communities of rehabilitation a *Cryptomera japonica* plantations to a mixed deciduous and coniferous forest



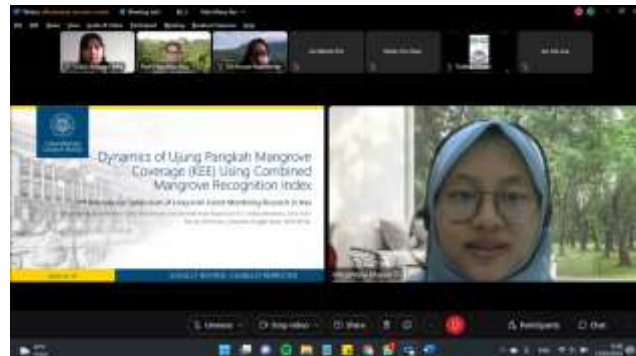


## Session 2. Monitoring and Policies

- 1 **Siti Husna Nurrohmah (UGM):**  
Spatial and Temporal Distribution of *Ganoderma* sp. at Urban Forest Gadjah Mada University



- 2 **Megantara Agustina Pertiwi Massie (UGM):**  
The Dynamics Of Ujung Pangkah Mangrove Coverage (KEE) Using Combined Mangrove Recognition Index



- 3 **Meizhi Lin (HU):**  
Remote Sensing of Tropical Rainforest Biomass Changes in Hainan Island, China from 2003 to 2018



- 4 **An-Chi Lou (NTU):**  
Development and implementation of community forestry policies in Taiwan



### Session 3. Certification and Ecosystem Services

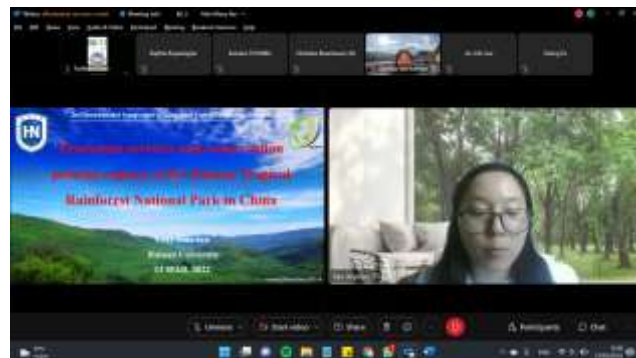
- 1 **Chokdee Khantawan (KU):**  
Forest Management  
Certification Status of Rubber  
Plantations in Thailand



- 2 **Rajita Rupasinghe (USJ):**  
 Revisiting Forest Certification  
 In Sri Lanka: The Forest  
 Management And Export  
 Wood-Based Manufacturing  
 Sector Perspective



- 3 **Xiaoyan Yao (HU):**  
Ecosystem services and  
conservation priority regions  
of the Hainan Tropical  
Rainforest National Park in  
China



- 4 **Kamlisa Uni Kamlun**  
**(UMS):**  
Mapping Ecosystem Services  
in Tropical Wetland Area of  
Sabah, Malaysia



## 2. General Discussion

### Report from RG1, Reporter: Nobuaki TANAKA

The image displays three screenshots of a presentation software interface, likely Beamer, showing a list of presentations in RG1. The interface includes a sidebar on the left with navigation icons and a main content area with a title and a bulleted list of presentations. The status bar at the bottom shows the page number and navigation controls.

**Presentations in RG1**

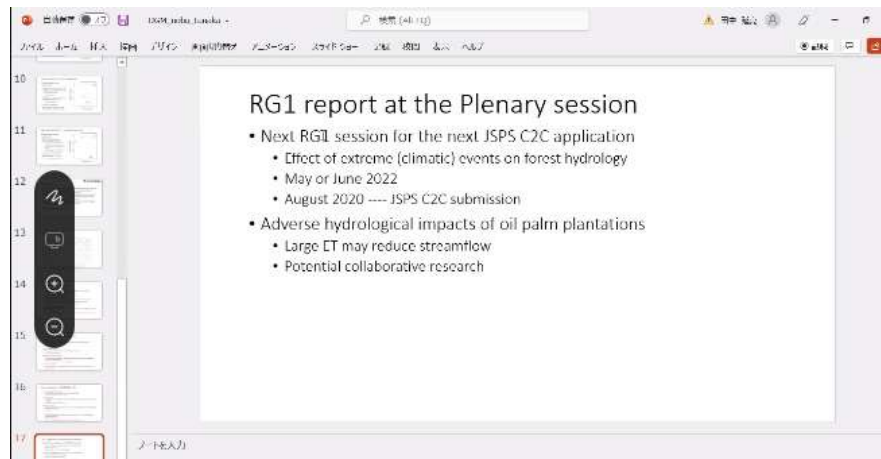
- Dr. Chatchai TANTASIRIN (KU)
  - Rainfall Characteristics and flood at a Hill Evergreen Forest, Big Ma Experimental Watershed, Northern Thailand
  - Event separation method, nearby stations, ENSO
- Prof. Haima Suryatmaja (UGM)
  - Runoff Hydrograph and Suspended Sediment Yield in Small Headwater Catchments in Tropical Rainforest, Central Kalimantan, Indonesia
  - Bukit Saka, SL & ILP effects, soil property measurement
- Dr. Hero Marhaento (UGM)
  - Long term impacts of forestation and climate change on hydrological processes of a tropical catchment
  - Bogowonto catchment (760,000ha), effects of LUC (forestation) and climate changes, flood and low flows

**Presentations in RG1 (No. 2)**

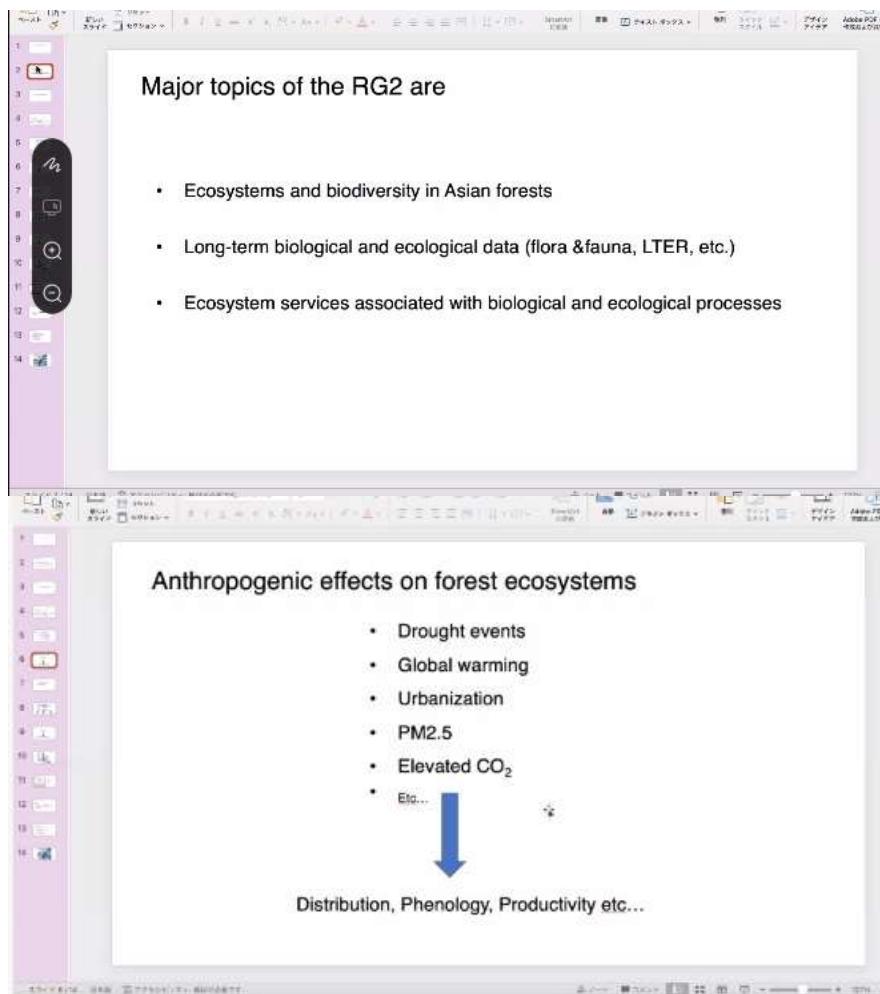
- Nobuaki TANAKA (UTokyo)
  - Climate elasticity of annual runoff from fifteen Asian forested catchments
  - More climate variables
  - Catchment size issue
- Anand Nainar (UMS)
  - Quantifying oil palm stemflow: methodological challenges
  - Plot size and sample size
- Moein FARAHNAK (UTokyo)
  - Runoff response to felled logs' placement direction on a slope after thinning in a Japanese cypress plantation
  - Rain intensity effects, labor for log placements
- Jaehyun KIM (SNU)
  - Experimental analysis of aggregate stability of crusted ash layer using ASWAT test
  - Hydrophobicity

**Presentations in RG1 (No. 3)**

- Dr. Tsung Ming TSAC (NTU)
  - Seasonal Variation of Ozone in Xitou Forest Environment
  - Peak time difference between seasons
- Xiu ZENG (HU)
  - The effect of winter chilling and spring forcing on spring phenology of subtropical tree seedlings
  - Comparison with previous studies
- Xiaoyan LIN (HU)
  - Simulation of Soil Water Retention Curves and Model Optimization in Tropical Latosol Rubber Planting Area
  - Soil depth
- Yen-Jen LAI (NTU)
  - Assessing the impact of climate change on water resources: a proposal for Asian experimental forests
  - GWLF model, CORDEX

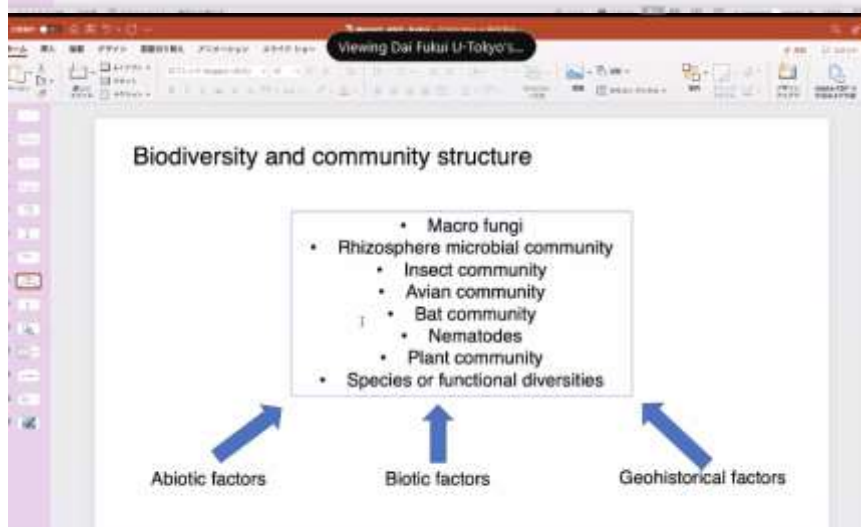


## Report From RG2, Reporter: Dai Fukui



Forest Pests and diseases

- Monitoring diversity and population dynamics
- Sex-aggregation pheromone of pests
- Taxonomy of pests and fungi



Breeding

- Provenance trials
- Progeny trials
- Genetic linkage map

A blue arrow points from the 'Breeding' section down to the text 'Sustainable wood production, efficient carbon fixation'.

Sustainable wood production, efficient carbon fixation







**Dr. Toshiaki OWARI (UTokyo)**

**Sub-session 1**

**Old Sugi (*Cryptomeria japonica*) plantations at the University of Tokyo  
Chiba Forest: Long-term growth trends and current status**

- Long-term growth trends of old Sugi (*Cryptomeria japonica*) plantations from experimental plots in UTCBF (, Chichibu and NTU) and inventory plots
- Growth is generally continuing in old plantations
- Large variation exists in growth of old stands

**Ms. Siti Husna Nurrohmah (UGM)**

**Sub-session 2**

**Spatial and Temporal Distribution of *Ganoderma* sp. on Old Trees at Urban Forest Universitas Gadjah Mada**

- Conducted monitoring the distribution of *Ganoderma*, a fungi causing wood decaying, on old trees at urban forest in UGM. Number of fruitbody of fungi, tree condition, disease incidence were recorded
- Root contact seemed to be the cause of spreading
- Increase of infected trees, especially legume trees, and infection severity data were obtained

**Ms. Megantara Agustina Pertiwi Massie (UGM)**

**Sub-session 2**

**The Dynamics Of Ujung Pangkah Mangrove Coverage (KEE) Using Combined Mangrove Recognition Index**

- Identifying mangrove coverage and knowing its dynamics through examining Landsat data, especially focusing on CMRI index
- Comparing 2020 and 2020, high and medium-density mangrove area were shrinking by logging and land conversion for ponds
- However, there were large additional area caused by accretion (sedimentation)

**Ms. Meizhi LIN (HU)**

**Sub-session 2**

**Remote Sensing of Tropical Rainforest Biomass Changes in Hainan Island, China from 2003 to 2018**

- Examining scientific big data of remote sensing for Hainan tropical rainforest. EVI (enhanced vegetation index) was used in several models for biomass prediction
- In Hainan island, especially in some regions with intense urbanization and tourism, rainforests and total biomass have been lost especially between 2013 and 2018
- Afforestation in areas with high rainfall is desirable

**Ms. An-Chi LOU (NTU)**

**Sub-session 2**

**Development and implement of community forestry policies in Taiwan**

- Examined community forestry programs in Taiwanese Forestry Bureau (since 2002) and NTUEF
- The programs have three(FB) or two(NTUEF)-stage designs, and most communities are still in 1st stage
- Compared to other initiatives, community forestry is continuous and helps to build interaction between forestry authorities and communities

**Ms. Chokdee KHANTAWAN (KU)**

**Sub-session 3**

**Management Certification Status of Rubber Plantations in Thailand**

- Examined FSC forest certification of rubber plantation in Thailand. FSC covers 0.6% of total plantation
- 4 planting patterns: monoculture, intercropping with trees or other plants, and rubber multiple cropping
- Found and categorized problems (CARs: corrective action requests) were such as implementation of management activities and poor monitoring

**Mr. Rajitha RUPASINGHE (USJP)**

**Sub-session 3**

**Forest Certification in Sri Lanka: Does it add value to Forest Management and Export Wood-based Manufacturing Sectors?**

- Examined forest certification in Sri Lanka through questionnaire survey and IPA (importance-performance analysis)
- Benefits and deficits of certification were clarified
- Some points are classified as tasks which "should be concentrated" (improvable performance)

**Dr. Xiaolan YAO (HU)**

**Sub-session 3**

**Ecosystem services and conservation priority regions of the Hainan Tropical Rainforest National Park in China**

- Five ecosystem services in Hainan Tropical Rainforest National Park were quantified spatially and temporally
- Conservation efficiencies in multiple scenarios were compared
- High-altitude area has high priorities of conservation

**Dr. Kamlisa Uni Kamlun (UMS)**

**Sub-session 3**

**Mapping Ecosystem Services Supply in Protected Forest Area**

- Mapped Malaysian and Indonesian wetland ecosystem services supply through "matrix model assessment" and thematic analysis, using qualitative assessments and land cover type information
- 19 subservices were determined and mapped
- Deterioration of services was found, especially in "regulating services"

**Dr. Chieh-Yin CHEN (NTU)**

**Study of mycorrhizal communities of rehabilitation a *Cryptomeria japonica* plantations to a mixed deciduous and coniferous forest**

- For rehabilitating Sugi (*Cryptomeria japonica*) plantation into mixed forest, silvicultural experiment with thinning and planting was conducted. Vegetation and soil microbial communities were examined
- Dominant understory species did not change, but many species were observed and cover ratio recovered after operation

**Symposium Presentation & Publication Plan 2022**

**Presentations**

- 3rd International Symposium of Long-term Forest Monitoring Research in Asia (UGM, USJP)
- 9th SAUFC (NTU): **mid Aug 2022**
- Small hybrid symposium in Thailand about the growth and yield of **teak** plantation (KU): **Jul or Aug 2022**

**Publications**

- Special Issue "Tropical Forestry: Conservation, Management and Utilization" for *Trees, Forests and People* (USJP)
- Book publication "Long-Term Monitoring and Research in Asian University Forests" (CRC Press)
- Special Issue "Long-Term Monitoring of Environmental Changes and Ecosystem Responses in Asian University Forests" for *Forests* (UTokyo)

**Collaborative Research Activity Plan 2022**

- Field work and research meeting on **Sugi** plantation (UTokyo, NTU, SNU)
- **Mangrove** carbon project in Sabah (UMS, USJP): **A new project funded by WWF Malaysia will commence this year. Perhaps this can collaborate with Prof. Perera of USJP?**
- Long Mio project (UMS, UTokyo): **Planned to publish 1 paper in the special issue organized by Prof. Perera (USJP) in *Trees, Forests and People*, and 1 paper in *Remote Sensing*.**
- **Timber and wood products (USJP)**

### 3. Closing and Awarding Ceremony

#### Poster Awards

##### First Prize

**Jichu PAN (UTokyo):** Effects of thinning on rainfall partitioning in a dense unmanaged Japanese cypress plantation



##### Second Prize

**Andreas Ade KRISTIAN (UTokyo):** Seasonal changes in the number of flying adults, body size, and the number of mycangium pits of *Platypus quercivorus*



##### Third Prize

**Arina Damayanti (UGM):** Three trophic level of insect community based on sandalwood (*Santalum album*; Santalaceae) flowering phase in Tlogo Village, Nglangeran, Gunungkidul



## **Closing Ceremony**

Prof. Kamata, Dr. Widiyatno (Represented Dean of Faculty of Forestry UGM) and Dr. Sri Rahayu as local organizer were close the symposium.



**END OF THE SYMPOSIUM**



## Appendix 1.

### List of Participants on Saturday, March 12, 2022

1	Dony Satrio Utomo	Indonesia	51	Jonathan Lucas	Malaysia	101	TAKEMOTO	Japan
2	Toshiaki Owari	Japan	52	Jingjing Wang	China	102	Taro Nakai	Japan
3	Mandy Maid	Malaysia	53	Jun Kim	Korea	103	Toshiaki Owari	Japan
4	Fiqri Ardiyasyah	Indonesia	54	Panida KACHINA	Thailand	104	Tsung-Ming TSAO	Taiwan
5	Adita Fauzan Filandri W	Indonesia	55	Kamlisa Uni Kamlun	Malaysia	105	Tyrone Mojikon	Malaysia
6	Yen-Jen LAI	Taiwan	56	Keisuke TOYAMA	Japan	106	Veroha Julni	Malaysia
7	Anand Nainar	Malaysia	57	Kohei KOBUTA	Japan	107	Umashankar Chandrasekaran	-
8	An-Chi Lou	Taiwan	58	Koichiro KURAJI	Japan	108	Weichen Hou	China
9	Andreas Ade KRISTIAN	Japan	59	Kritsadapan Palakit	Thailand	109	Widiyatno	Indonesia
10	Arif Tirta Alviana	Indonesia	60	Kwang Hyun NAM	Korea	110	Wilson V.C Wong	Malaysia
11	Atika Bakar	Malaysia	61	Kyu-Suk KANG	Korea	111	Win Sithu Maung	Japan
12	Aye Myat Myat Paing	Japan	62	Lee Hye Jin	Korea	112	Xiaoyan LIN	China
13	Azniza	Malaysia	63	Liang Huaiyue	China	113	Xinyao LIU	Japan
14	Balangoda Singhakumara	Sri Lanka	64	Lin Meizhi	China	114	Xiu ZENG	China
15	Bayu Anggita W	Indonesia	65	Maria Lourdes T	Malaysia	115	XU Qiaoyi	Japan
16	Biing T. GUAN	Taiwan	66	Maznah Mahali	Malaysia	116	Yao Xiaolan	China
17	Chai Lee Ting	Taiwan	67	Moein FARAHNAK	Japan	117	Yaseen	China
18	Chang Fu	China	68	Naoko Miura	Japan	118	Yoko Hisamoto	Japan
19	Chatchai TANTASIRIN	Thailand	69	Ni Putu Diana M	Indonesia	119	Yusuke MIZUUCHI	Japan
20	Chen Shufen	Japan	70	Naoto KAMATA	Japan	120	Zha Shihao	Japan
21	Chen Tian	Japan	71	Nias Putri M N	Indonesia	121	Zhiyan Deng	China
22	Chokdee Khantawan	Thailand	72	Ningxin Cai	Japan	122	Yike ZOU	China
23	Chulwon Lee	Korea	73	Dr. Chiang Wei	Taiwan	123	Imron	Indonesia
24	Chun-lin LI	Taiwan	74	Nyo Me Htun	Japan	124	Arerut	-
25	Dai KUSUMOTO	Japan	75	Pan Jichu	Japan	125	Hojin Lee	Korea
26	Dewanti Uma Rahmaningtyas	Indonesia	76	Pil Sun Park	Korea	126	Nobuaki TANAKA	Japan
27	Dilini Wickramasinghe	Sri Lanka	77	Prof. Phua Hui How	Malaysia	127	Arina Damayanti	Indonesia
28	Dokrak Marod	Thailand	78	RCC Perera	Sri Lanka	128	Dai Fukui	Japan
29	Eun Ho Choi	Korea	79	Rajitha Lakshan Rupasinghe	Sri Lanka	129	Dhong-Ghun Yao	
30	Eun-Jung Kim	Korea	80	REN Ming-Xun	China	130	Ei Sandi Sett	Korea
31	Eva Lutfiana	Indonesia	81	Rhema Maripa	Malaysia	131	Wongsatorn PHUMPHUANG	Thailand
32	Evahtira Gunggot	Malaysia	82	Rizki Arisandi	Indonesia	132	Yang-Gil Kim	Korea
33	EXFO-YU Jui-Cho Nicky	Taiwan	83	Romadona Maghfiroh	Indonesia	133	Yeongkon Woo	Korea
34	Fang-Hua Chu	Taiwan	84	SAKAUE Daisuke	Japan			
35	Fera Cleophas	Malaysia	85	Salsa Yumna Farazika	Indonesia			
36	Fiza Liaquat	Korea	86	SAS	-			
37	Galuh Anggara	Indonesia	87	Satoshi Suzuki	Japan			
38	GGT Chandrathilake	Sri Lanka	88	Sen-Sung Cheng	Taiwan			
39	Susumu Goto	Japan	89	Sigit Sunarta	Indonesia			
40	Gyehong Cho	Korea	90	Siti Fatimah Md Isa	Malaysia			
41	Hatma Suryatmojo	Indonesia	91	Siti Husna Nurroahmah	Indonesia			
42	Hero Marhaento	Indonesia	92	Siti Maimunah	Indonesia			
43	Hui Zhang	China	93	Siyeon	Korea			
44	Ibtisan GHAUS	Japan	94	Sri Rahayu	Indonesia			
45	Il-Kwon Park	Korea	95	Sukyung Kim	Korea			
46	Sangjun IM	Korea	96	Syaiful Amri Saragih	Indonesia			
47	Hyun Seok Kim	Korea	97	Seohyun Kim	Korea			
48	Jae-Woo Lee	Korea	98	Taehyun KIM	Korea			
49	Jeman Lee	Korea	99	Takahiro Maki	Japan			
50	Jeonghyun Hong	Korea	100	Takanori Sato	Japan			

## Appendix 2.

### List of Participants on Each Research Group On Sunday, March 13, 2022

No	Participant RG1	Country	No	Participant RG2	Country	No	Participant RG3	Country
1	Dony Satrio Utomo	Indonesia	1	Elia Godoong	Malaysia	1	Toshiaki Owari	Japan
2	Yen-Jen LAI	Taiwan	2	Biing T. Guan	Taiwan	2	An-Chi Lou	Taiwan
3	Anand Nainar	Malaysia	3	Adita Fauzan Filandri W	Indonesia	3	Arina Damayanti	Indonesia
4	Atika Bakar	Malaysia	4	Andreas Ade KRISTIAN	Japan	4	Chen Tian	Japan
5	Bei Yifan		5	Arerut	-	5	Chieh-Yin Chen	Taiwan
6	Chatchai TANTASIRIN	Thailand	6	Aye Myat Myat Paing	Japan	6	Chokdee Khantawan	Thailand
7	Fera CLEOPHAS	Malaysia	7	Azniza	Malaysia	7	Farhan Yoga	Indonesia
8	Hatma Suryatmojo	Indonesia	8	Chen Shufen	Japan	8	Galuh Anggara	Indonesia
9	Hero Marhaento	Indonesia	9	Chunlinli	Taiwan	9	Gery Novrian	Indonesia
10	Ibtisan Ghaus	Japan	10	Dai Fukui	Japan	10	Hyun Seok Kim	Korea
11	Sangjun IM	Korea	11	Dai KUSUMOTO	Japan	11	Ishibashi Seiji	Japan
12	Koichiro KURAJI	Japan	12	Dokrak Marod	Thailand	12	Kamlisa Uni Kamlun	Malaysia
13	Moein Farahnak	Japan	13	Ei Sandi Set	Korea	13	Keisuke TOYAMA	Japan
14	Pan JICHU	Japan	14	Evathira Gunggot	Malaysia	14	Khwanchai	Thailand
15	Sam		15	Fang-Hua Chu	Taiwan	15	Kritsadapan PALAKIT	Thailand
16	Sri Rahayu	Indonesia	16	Hui Zhang, HU	China	16	Kwang Hyun Nam	Korea
17	Taehyun Kim	Korea	17	Jonathan Lucas	Malaysia	17	Lin Meizhi	China
18	Takanori Sato	Japan	18	KACHINA Panida	Thailand	18	Mandy Maid	Malaysia
19	Thilakawansha Chandrat	Sri Lanka	19	Kyu-Suk Kang	Korea	19	Megantara APM	Indonesia
20	Tsung-Ming Tsao	Taiwan	20	Maria Lourdes T. Lardizab	Malaysia	20	Naoko Miura	Japan
21	Xiu ZENG	China	21	Naoto KAMATA	Japan	21	Nyo Me Htun	Japan
22	Taro Nakai	Japan	22	Ni Putu Diana Mahayani	Indonesia	22	Pil Sun Park	Korea
23	Yuko Asano	Japan	23	Nianxun Xi	China	23	Prof. Phua Hui How	Malaysia
24	Nobuaki TANAKA	Japan	24	Rhema Maripa	Malaysia	24	Rajitha Rupasinghe	Sri Lanka
25	Tyrone Mojikon	Malaysia	25	Rizki Arisandi	Indonesia	25	Romadona Maghfiroh	Indonesia
26	Chulwon Lee	Korea	26	Ryan Sappenfield	-	26	Sakaue Daisuke	Japan
27	Xiaoyan Lin	China	27	Satoshi Suzuki	Japan	27	Sen-Sung Cheng	-
28	Eva Lutfiana	Indonesia	28	Siti Maimunah	Indonesia	28	Siti Husna Nurroahmah	Indonesia
29	SAKAUKE Daisuke	Japan	29	Susumu GOTO	Japan	29	Wilson V.C Wong	Malaysia
30	Kim Jung Yoon	Korea	30	Syaiful Amri Saragih	Indonesia	30	Winf Sithu Maung	Japan
			31	TAKEMOTO	Japan	31	Xu Qiaoyi	Japan
			32	Tyrone Mojikon	Malaysia	32	Yao Xiaolan	China
			33	Wongsatorn PHUMPHUAN	Thailand	33	Yasuke MIZUUCHI	Japan
			34	Yoko Hisamoto	Japan	34	Ananto Triyogo	Indonesia
			35	Ananto Triyogo	Indonesia	35	Chang Fu	China
			36	Zou Yike	China			
			37	Kwang Hyun Nam	Korea			
			38	Sri Rahayu	Indonesia			
			39	Yang-Gil Kim	Korea			
			40	Yoonji	-			
			41	Gyehong Cho	Korea			
			42	Huh Minjung	Korea			
			43	SAKAUE Daisuke	Japan			
			44	Thilakawansha Chandrat	Sri Lanka			
			45	Xiu ZENG	China			